

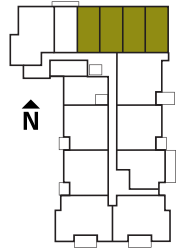
VENTURA

PLAN B

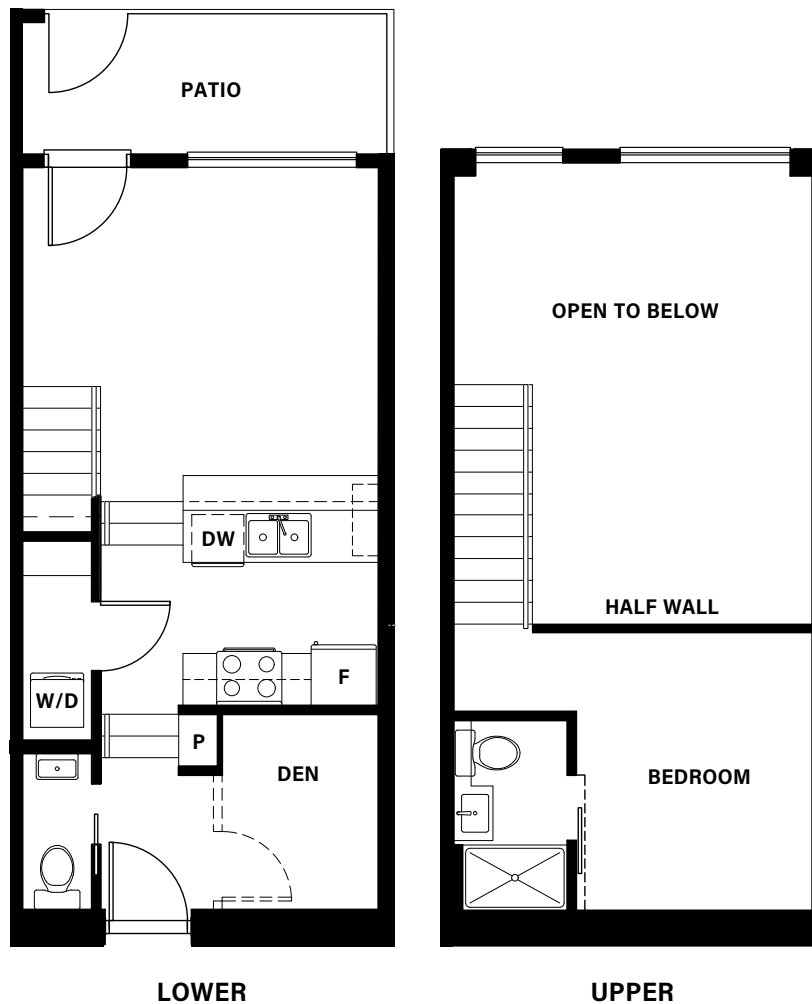
1 BEDROOM + DEN LOFT

629 - 643 sq.ft.

- Modern loft design with airy 18' + ceilings.
- Handy den on main floor for home office.
- Double entry from corridor or street access.
- Extra storage under the stairs.



FLOOR 1



HOME IN THE CITY CENTRE

venturaabbotsford.com

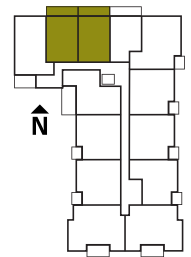
VENTURA

PLAN C

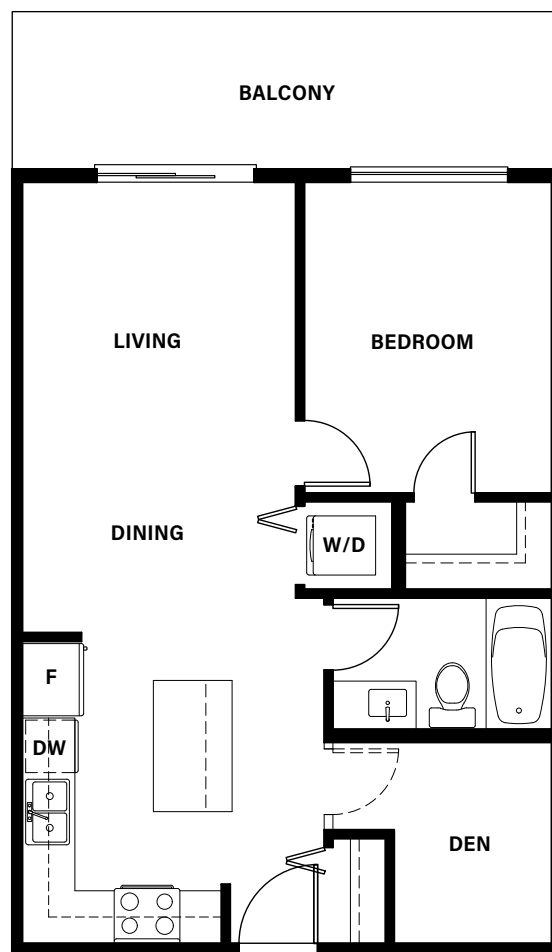
1 BEDROOM + DEN, 1 BATH

630 sq.ft.

- Entertainer's Kitchen with island and snack bar.
- Carefully designed floor plan with little wastage space.
- Handy den for home office.
- 21 ft wide balcony.



FLOORS 2, 3 & 4



HOME IN THE CITY CENTRE

venturaabbotsford.com

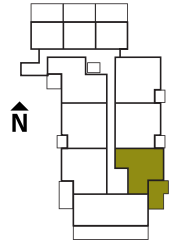
VENTURA

PLAN E

2 BEDROOM + 1.5 BATH WITH TOP FLOOR TERRACE

728 sq.ft.

- Entertainer's kitchen featuring table island.
- Handy pantry beside Kitchen.
- Large top floor terrace facing the sunrise and Mt. Baker!
- Large ensuite with double access.



FLOOR 6



HOME IN THE CITY CENTRE

venturaabbotsford.com

In our continuing effort to improve and maintain the high standard of the Ventura development, the developer reserves the right to modify or change plans, layouts, specifications, features, including appliances, and prices without notice. Materials may be substituted with equivalent or better at the developer's sole discretion. All dimensions and sizes are approximate and are based on architectural measurements. As reverse, flipped and/or mirrored plans occur throughout the development please see architectural plans for current unit layout, if material to your decision to purchase. Illustrations, renderings and marketing materials provided are an artist's conception and are intended as a general reference only, all subject to change without prior notice and not to be relied upon. Please ask one of the helpful sales staff to reference the current architectural set of construction drawings for the most accurate dimensions and other details at time of sale. Please refer to disclosure statement for specific offering details. E.&O.E.

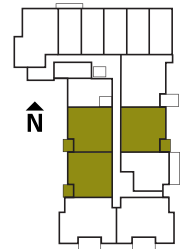
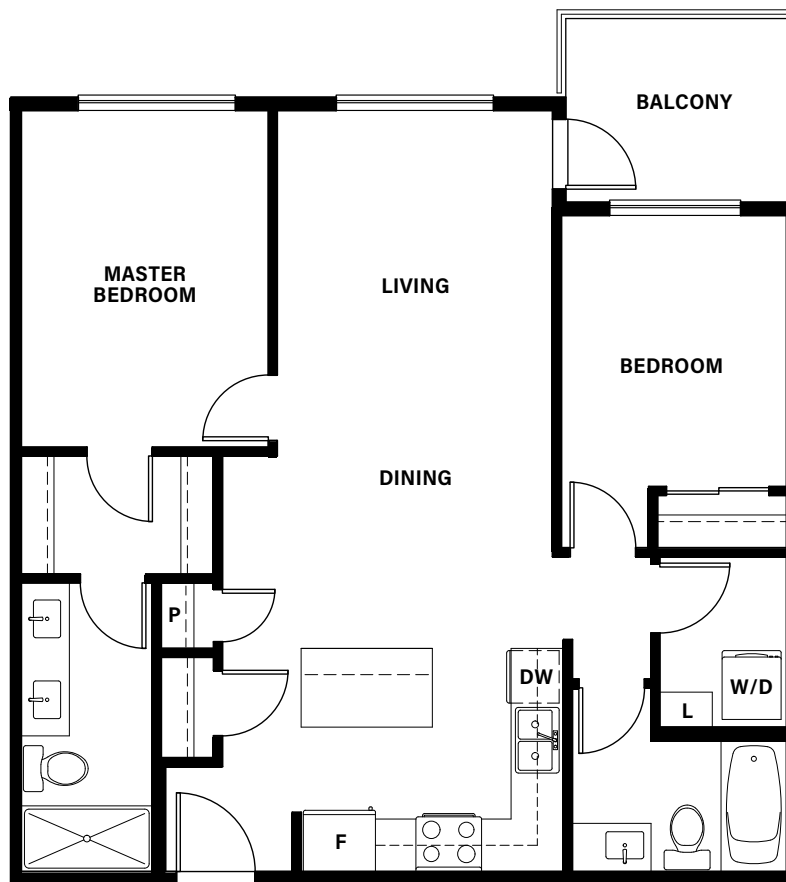
V E N T U R A

PLAN J

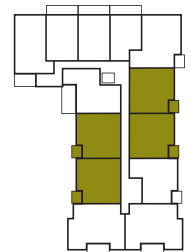
2 BEDROOM + 2 BATH

865 sq.ft.

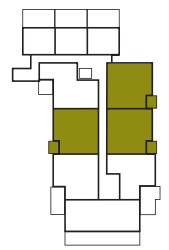
- Generously sized open concept home.
- Entertainers kitchen with island and pantry.
- Spacious spa-like ensuite.
- Available with either sunrise or sunset views.



FLOOR 1



FLOORS 2, 3, 4 & 5



FLOOR 6

HOME IN THE CITY CENTRE

venturaabbotsford.com

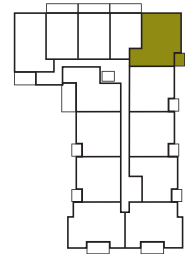
VENTURA

PLAN K

2 BEDROOM + 2 BATH CORNER HOME

914 sq.ft.

- Beautiful northeast corner home with lots of light.
- Galley kitchen with large island seating for 4.
- Handy Pantry beside kitchen.



FLOOR 5



HOME IN THE CITY CENTRE

venturaabbotsford.com

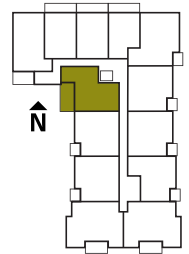
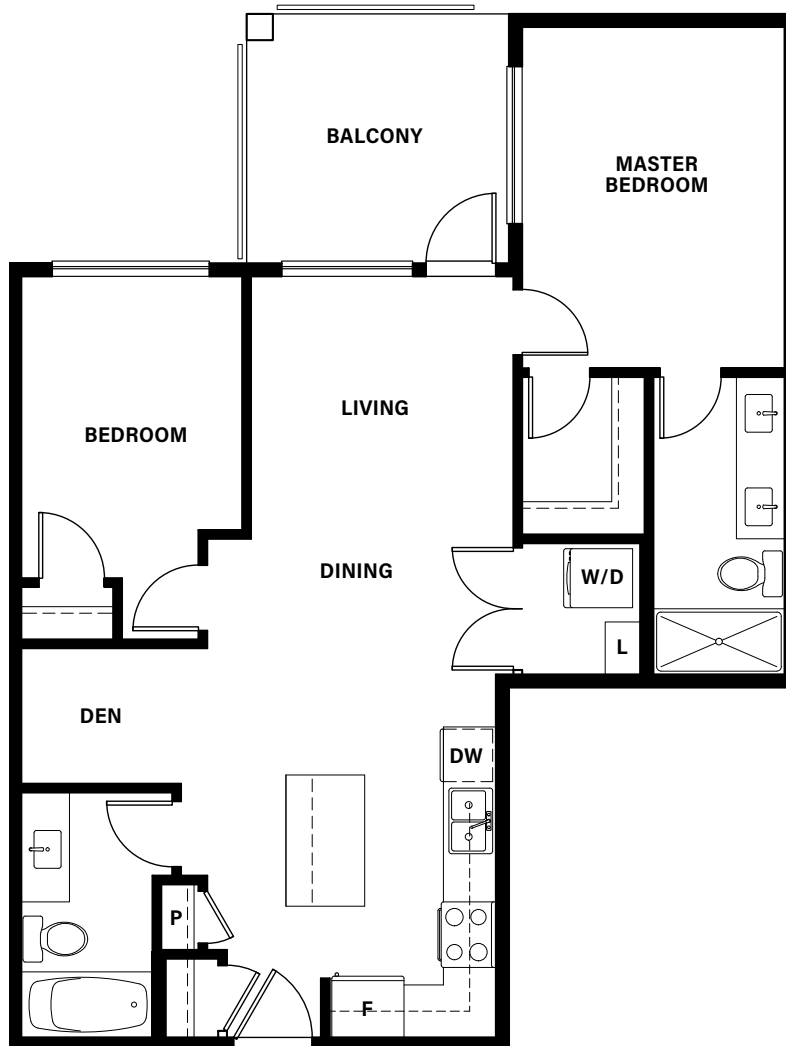
VENTURA

PLAN L

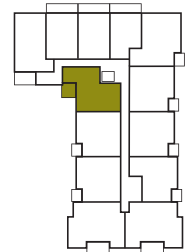
2 BEDROOM + DEN, 2 BATH

852 sq.ft.

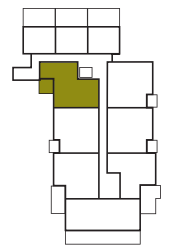
- Open concept home with den perfect for home office.
- Huge walk-in closet and spa-like ensuite in master.
- Spacious deck with sunset views overlooking backyard oasis.
- Extra room in laundry with double doors.



FLOOR 2



FLOORS 3, 4 & 5



FLOOR 6

HOME IN THE CITY CENTRE

venturaabbotsford.com

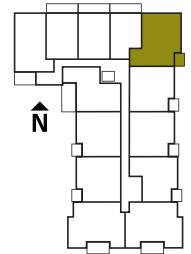
VENTURA

PLAN M

2 BEDROOM + DEN, 2 BATH CORNER HOME

971 sq.ft.

- Beautiful northeast corner home with lots of light.
- Galley kitchen with large island seating for 4.
- Private den off entrance for home office.
- Handy pantry and linen for extra storage.



FLOORS 2, 3 & 4



HOME IN THE CITY CENTRE

venturaabbotsford.com

In our continuing effort to improve and maintain the high standard of the Ventura development, the developer reserves the right to modify or change plans, layouts, specifications, features, including appliances, and prices without notice. Materials may be substituted with equivalent or better at the developer's sole discretion. All dimensions and sizes are approximate and are based on architectural measurements. As reverse, flipped and/or mirrored plans occur throughout the development please see architectural plans for current unit layout, if material to your decision to purchase. Illustrations, renderings and marketing materials provided are an artist's conception and are intended as a general reference only, all subject to change without prior notice and not to be relied upon. Please ask one of the helpful sales staff to reference the current architectural set of construction drawings for the most accurate dimensions and other details at time of sale. Please refer to disclosure statement for specific offering details. E.&O.E.

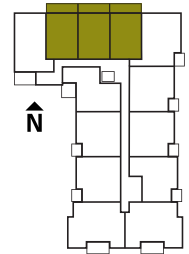
VENTURA

PLAN N

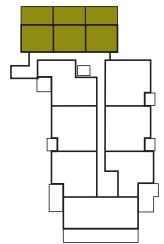
2 BEDROOM + DEN, LOFT, 2 BATH WITH TOP FLOOR TERRACE

998 sq.ft. (Upper 368 sq.ft. / Lower 630 sq.ft.)

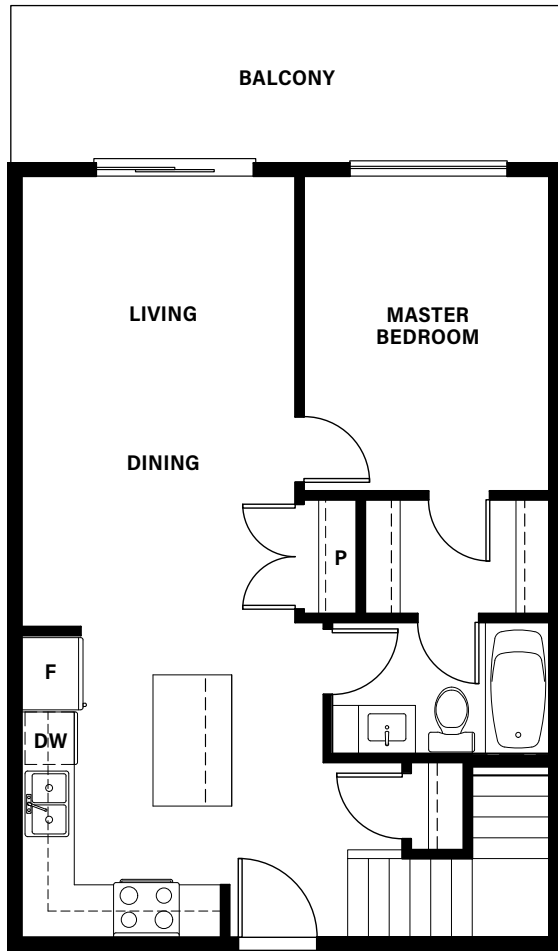
- Modern loft home includes balcony and a top floor terrace with 378 sq.ft. additional outdoor living.
- Entertainer's kitchen with island and huge pantry.
- Second floor with second master and side by side laundry.
- Plus den and extra linen storage on second floor.



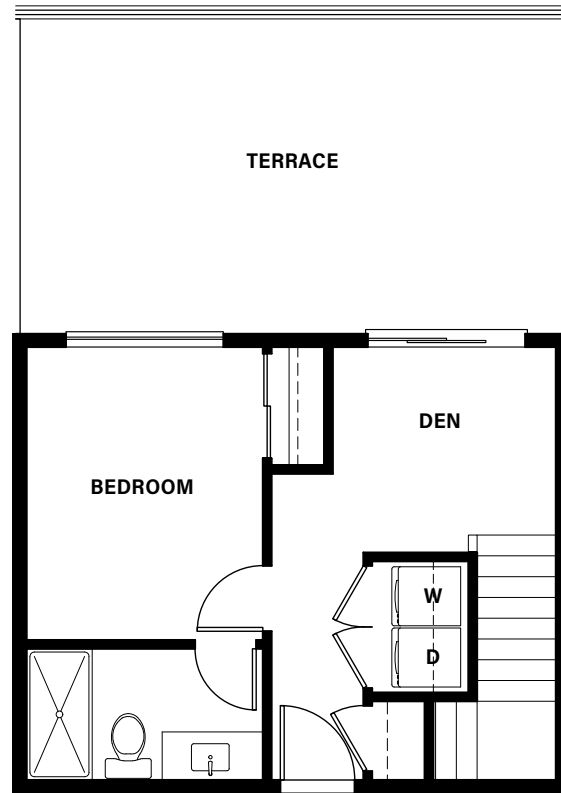
FLOOR 5



FLOOR 6



LOWER



UPPER

HOME IN THE CITY CENTRE

venturaabbotford.com

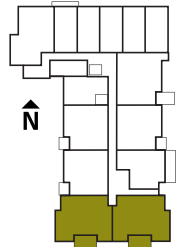
V E N T U R A

PLAN P

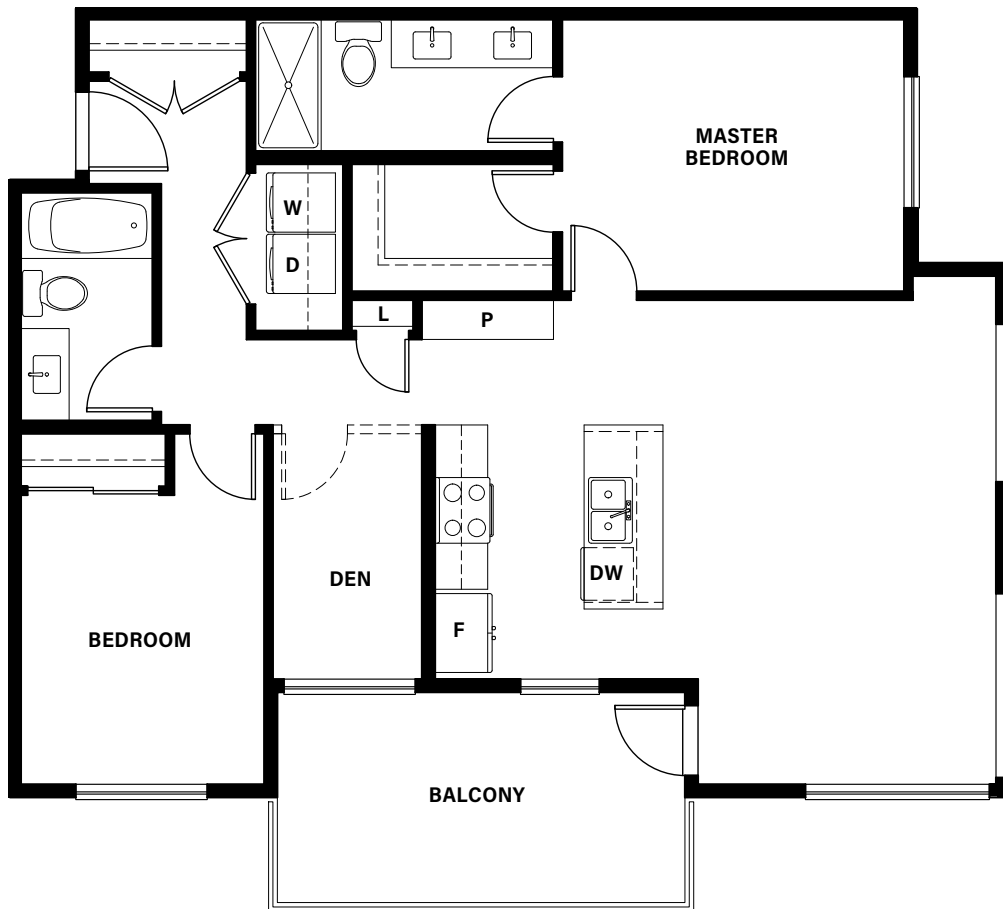
2 BEDROOM + DEN, 2 BATH CORNER HOME

1,028 sq.ft.

- Gorgeous corner home with extra storage and the entertainer in mind.
- Galley kitchen with large 7ft island and butlers pantry.
- Huge corner windows let in light and sunrise/sunset views.
- Side by side laundry and generous deck with southern views.



FLOORS 1, 2, 3, 4 & 5



Please Note: Ground floor homes will have a sliding door in replace of a dining room window for access to additional patio space.
Please refer to architectural plans.

HOME IN THE CITY CENTRE

venturaabbotsford.com

In our continuing effort to improve and maintain the high standard of the Ventura development, the developer reserves the right to modify or change plans, layouts, specifications, features, including appliances, and prices without notice. Materials may be substituted with equivalent or better at the developer's sole discretion. All dimensions and sizes are approximate and are based on architectural measurements. As reverse, flipped and/or mirrored plans occur throughout the development please see architectural plans for current unit layout, if material to your decision to purchase. Illustrations, renderings and marketing materials provided are an artist's conception and are intended as a general reference only, all subject to change without prior notice and not to be relied upon. Please ask one of the helpful sales staff to reference the current architectural set of construction drawings for the most accurate dimensions and other details at time of sale. Please refer to disclosure statement for specific offering details. E.&O.E.